

Chapter 3: Rhythm Intermediate

3-1 Note Values In Common Time Review

breezin' thru™ theory
See It - Hear It



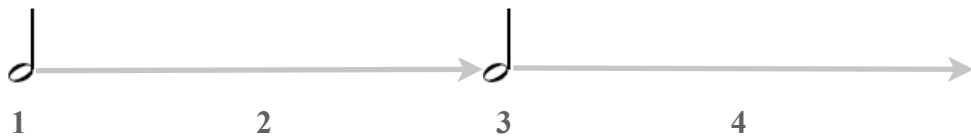
Press the speaker to hear it.



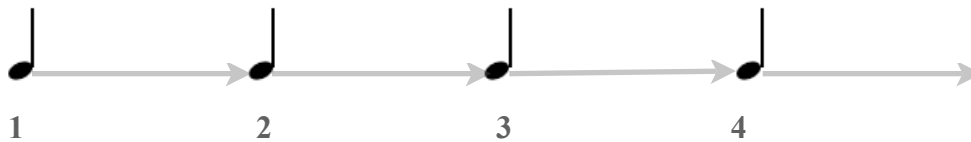
**Whole Note:
4 Beats Long**



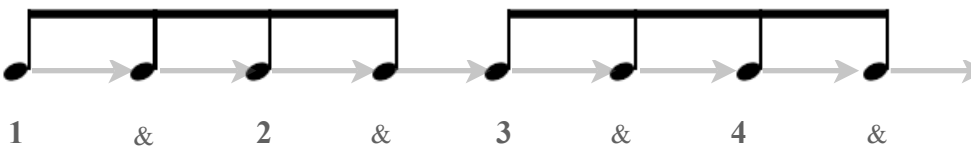
**Half Notes:
2 Beats Long**



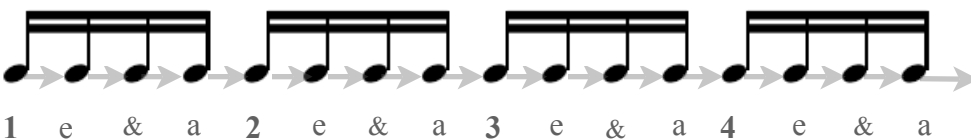
**Quarter Notes:
1 Beat Long**



**Eighth Notes:
2 per Beat**



**Sixteenth Notes:
4 per Beat**



Chapter 3: Rhythm Intermediate

3-2 Rest Values in Common Time Review

breezin' thru™ theory 
See It - Hear It



Press the speaker to hear it.



Whole Note:
4 Beats Long



Whole Rest:
4 Beats Long

Half Note:
2 Beats Long



Half Rest:
2 Beats Long

Quarter Note:
1 Beat Long



Quarter Rest:
1 Beat Long

Eighth Note:
2 per Beat



Eighth Rest:
2 per Beat

Sixteenth Note:
4 per Beat



Sixteenth Rest:
4 per Beat

Chapter 3: Rhythm Intermediate

3-3 Note Shapes Review



Press the speaker to hear it.



Stem Direction: Note stems go up or down according to their position on the staff.

→ Notes sitting on or above the middle staff line have stems that go down.



→ Notes sitting on or below the middle staff line have stems that go up.



Whole Note



→ When the note goes up,
the stem is on the right.

Half Notes



→ When the note goes down,
the stem is on the left.

Quarter Notes



Eighth Notes



Beams

Flags



- Beams join eighth and sixteenth notes together
- Flags are used for single eighth & sixteenth notes.

Sixteenth Notes



Chapter 3 : Rhythm Intermediate

3-4 Simple Time Signatures Review



Press the speaker to hear it.



Time Signature: Found on the left side of the music staff, it indicates how many beats there are in each measure and what kind of note value gets the beat.

Four beats per measure

4 **4** Time

The quarter note gets the beat

Two beats per measure

2 **4** Time

The quarter note gets the beat

Three beats per measure

3 **4** Time

The quarter note gets the beat