

Chapter 2: Rhythm Basics

2-1 Beat and Time in Music



Press the speaker to hear it.



The Beat: A steady pulse ● we feel, that brings music to life.

The Measure: A group of beats.

The Barline: Lines that separate measures.

Time Signature: The top number tells how many beats there are in every measure.

Counting: Beats are numbered from left to right.

Tempo: The speed of the beat.

Tempo
Lento ♩ = 75

Time Signature

Beats

Counting

Barline

Measure

Chapter 2: Rhythm Basics

2-2 Note Values in Common Time

breezin' thru™ theory
See It- Hear It



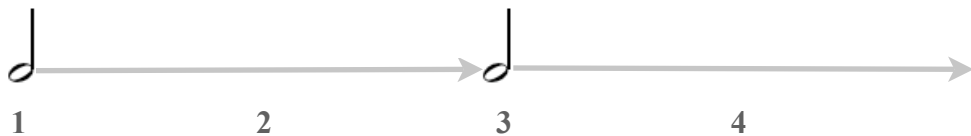
Press the speaker to hear it.



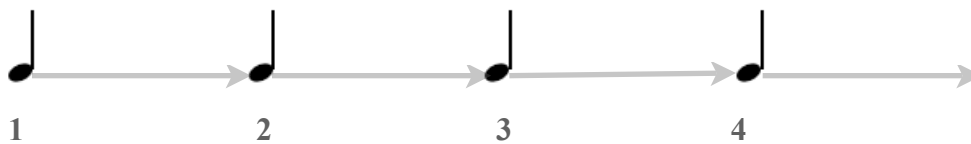
**Whole Note:
4 Beats Long**



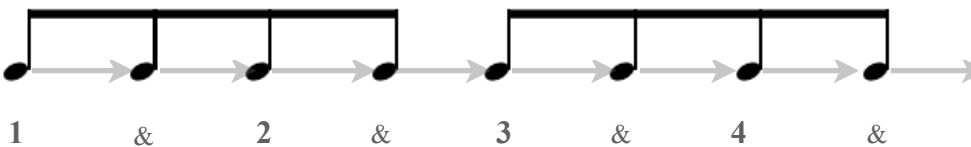
**Half Notes:
2 Beats Long**



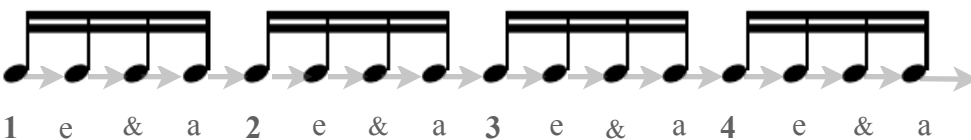
**Quarter Notes:
1 Beat Long**



**Eighth Notes:
2 Per Beat**



**Sixteenth Notes:
4 Per Beat**



Chapter 2: Rhythm Basics

2-3 Rest Values In Common Time

breezin' thru™ theory
See It - Hear It



Press the speaker to hear it.



**Whole Note:
4 Beats Long**



**Whole Rest:
4 Beats Long**

**Half Note:
2 Beats Long**



**Half Rest:
2 Beats Long**

**Quarter Note:
1 Beat Long**



**Quarter Rest:
1 Beat Long**

**Eighth Note:
2 per Beat**



**Eighth Rest:
2 per Beat**

**Sixteenth Note:
4 per Beat**



**Sixteenth Rest:
4 per Beat**

Chapter 2: Rhythm Basics


2-4 Note Shapes




Press the speaker to hear it.





Stem Direction: Notes stems go up or down according to their position on the staff.

→ Notes sitting on or above the middle staff line have stems that go down. 

→ Notes sitting on or below the middle staff line have stems that go up. 

Whole Note 



- When the note goes up, the stem is on the right. 
- When the note goes down, the stem is on the left. 

Half Notes  

Quarter Notes  

Eighth Notes    



- Beams join eighth and sixteenth notes together
- Flags are used for single eighth & sixteenth notes.

Sixteenth Notes    

Beams

Flags

Chapter 2: Rhythm Basics

2-5 Simple Time Signatures



Press the speaker to hear it.



Time Signature: Found on the left side of the music staff, it indicates how many beats there are in each measure and what kind of note value gets the beat.

Four beats per measure

4
4 Time

The quarter note gets the beat

Detailed description: A musical staff with a treble clef and a key signature of one flat. The time signature is 4/4. The top '4' is above the staff and the bottom '4' is below. An arrow points from the text 'Four beats per measure' to the top '4'. The staff contains four quarter notes, each with a stem pointing up. An arrow points from the text 'The quarter note gets the beat' to the first quarter note.

Two beats per measure

2
4 Time

The quarter note gets the beat

Detailed description: A musical staff with a treble clef and a key signature of one flat. The time signature is 2/4. The top '2' is above the staff and the bottom '4' is below. An arrow points from the text 'Two beats per measure' to the top '2'. The staff contains two quarter notes, each with a stem pointing up. An arrow points from the text 'The quarter note gets the beat' to the first quarter note.

Three beats per measure

3
4 Time

The quarter note gets the beat

Detailed description: A musical staff with a treble clef and a key signature of one flat. The time signature is 3/4. The top '3' is above the staff and the bottom '4' is below. An arrow points from the text 'Three beats per measure' to the top '3'. The staff contains three quarter notes, each with a stem pointing up. An arrow points from the text 'The quarter note gets the beat' to the first quarter note.